

## Current Results by Patient Factor

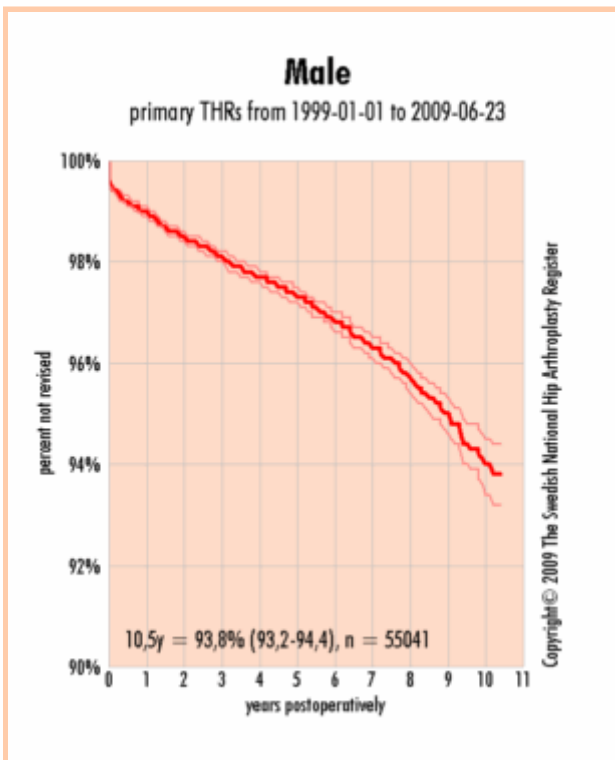
Survival statistics by patient-related factors from January 1st, 1999 through today.

This section shows implant survival statistics by patient-related factors. Shown below are survival charts with respect to gender, age at primary THR and primary diagnosis. The diagnosis charts represents the three major diagnosis groups, as has been published earlier in various publications.

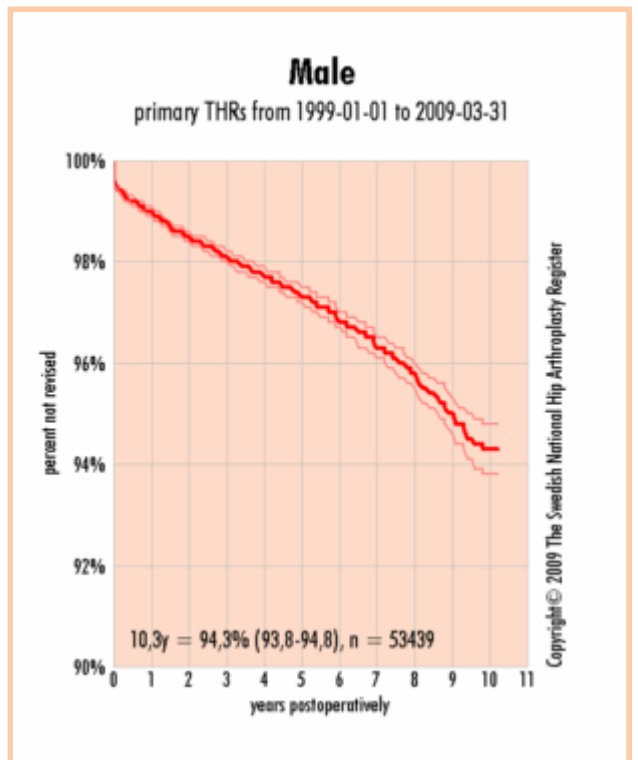
The end-point failure definition is replacement of any implant component. Shown below are the results today and, as comparison, the results at *the end of the last quarter*. There are a fair amount of primary THRs but due to the short observation time, not many of them has been revised. In the charts below, the thick red line is the survival statistic and the thin, light-red lines are the upper and lower 95% confidence limits. Note that all material (all diagnosis, all reasons for revision) is included. The survival statistic is adjusted with respect to diseased.

In the bottom, left corner of each chart is a summary which contains (in order), the longest observed survival time in years, the cumulative survival probability at this time with 95% confidence limits in parentheses and the number of observations at time zero. The survival calculation is the Kaplan-Meier estimator.

### Today's results:

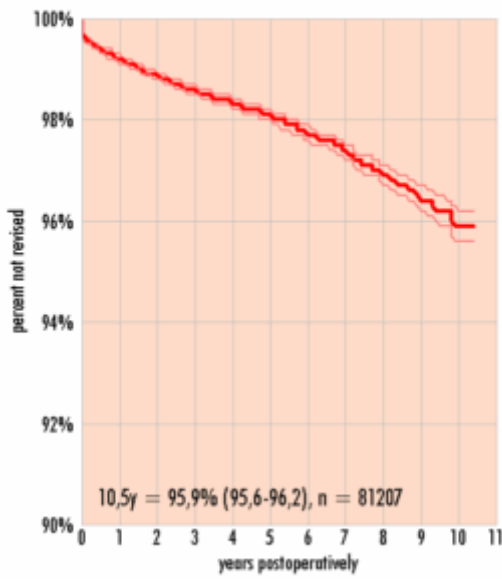


### Results last quarter:



### Female

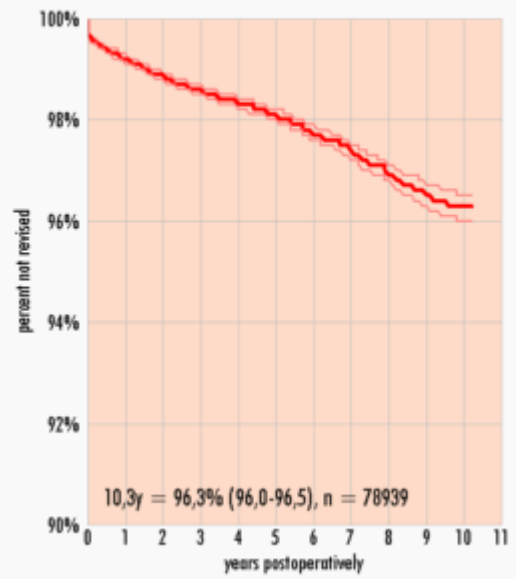
primary THRs from 1999-01-01 to 2009-06-23



Copyright © 2009 The Swedish National Hip Arthroplasty Register

### Female

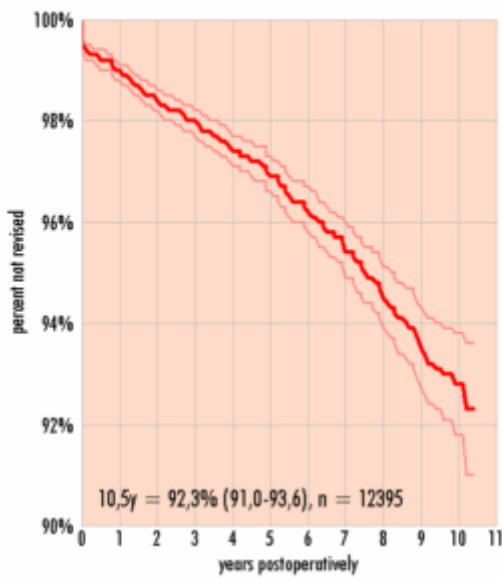
primary THRs from 1999-01-01 to 2009-03-31



Copyright © 2009 The Swedish National Hip Arthroplasty Register

### Younger than 55 years

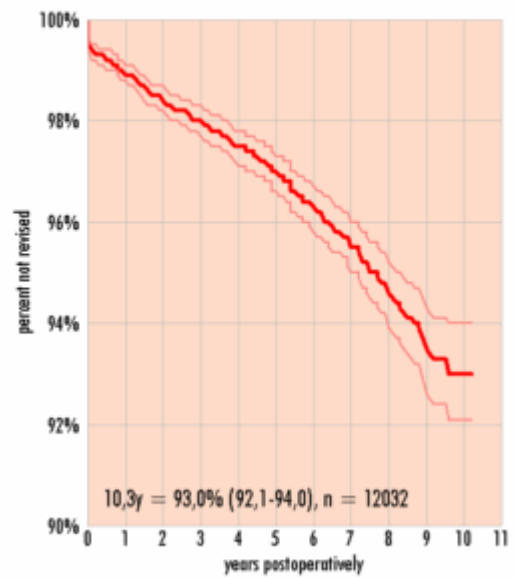
primary THRs from 1999-01-01 to 2009-06-23



star

### Younger than 55 years

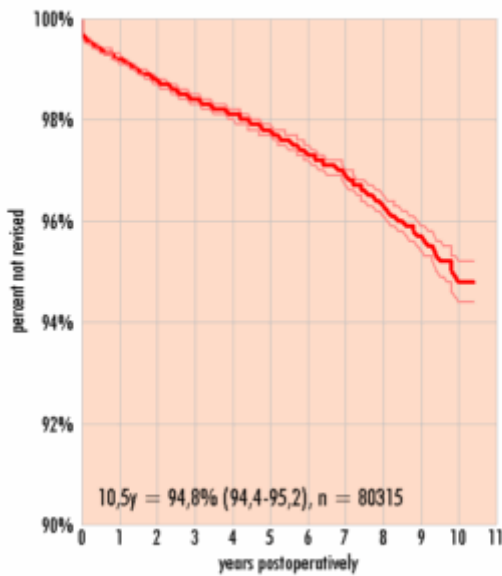
primary THRs from 1999-01-01 to 2009-03-31



star

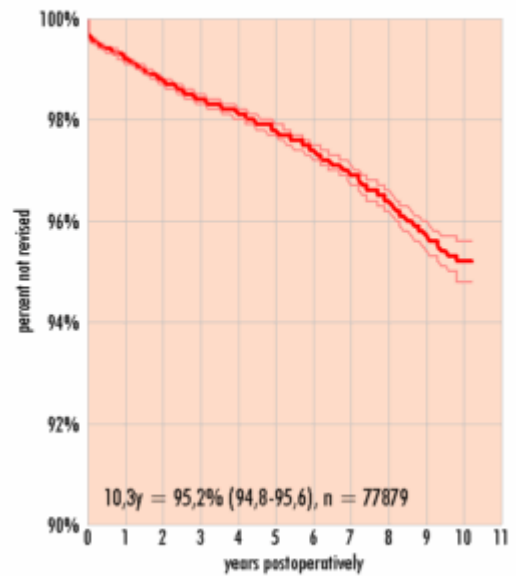
### Between 55 and 75

primary THRs from 1999-01-01 to 2009-06-23



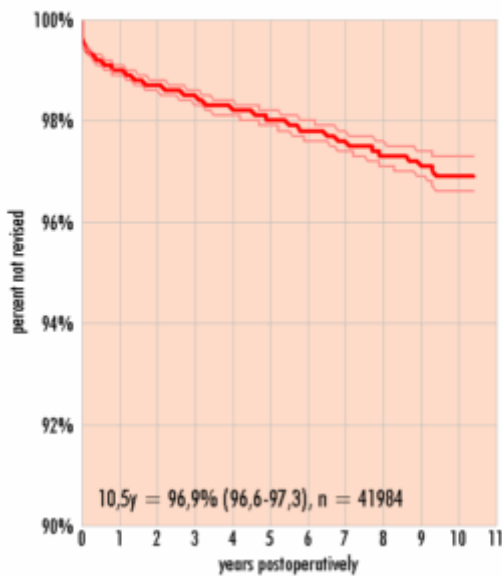
### Between 55 and 75

primary THRs from 1999-01-01 to 2009-03-31



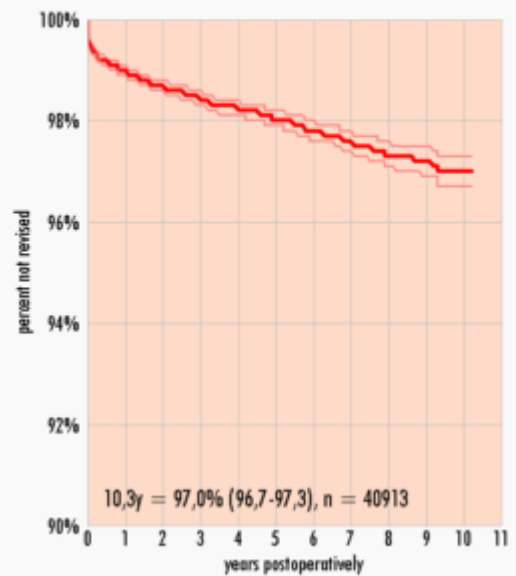
### Older than 75

primary THRs from 1999-01-01 to 2009-06-23



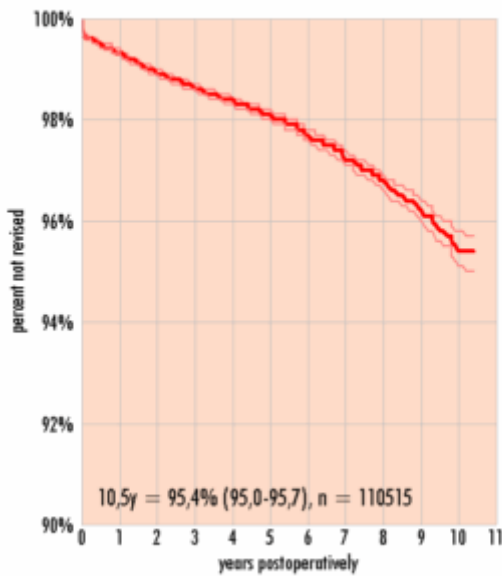
### Older than 75

primary THRs from 1999-01-01 to 2009-03-31



### Primary Osteoarthritis

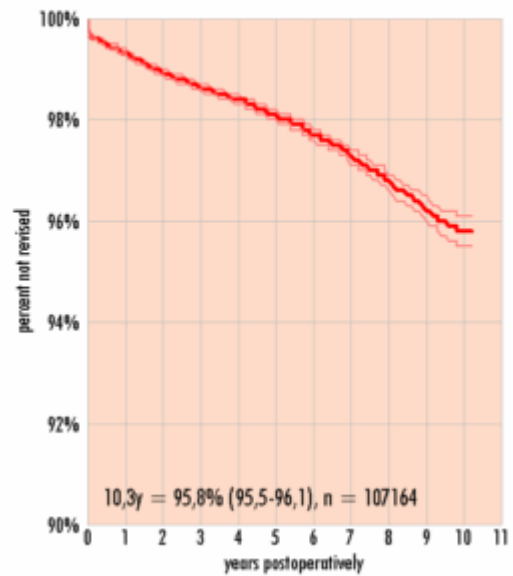
primary THRs from 1999-01-01 to 2009-06-23



Copyright © 2009 The Swedish National Hip Arthroplasty Register

### Primary Osteoarthritis

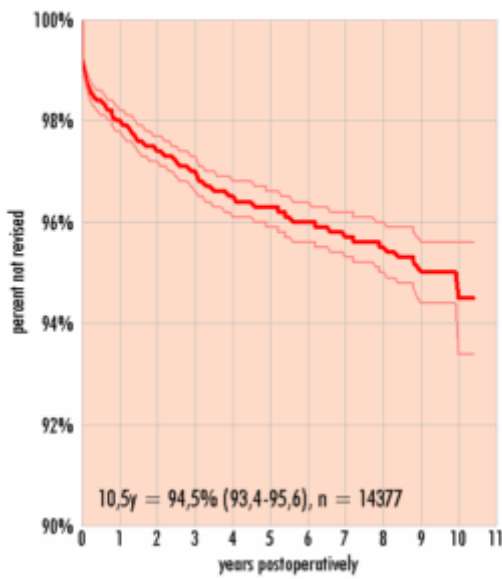
primary THRs from 1999-01-01 to 2009-03-31



Copyright © 2009 The Swedish National Hip Arthroplasty Register

### Fracture

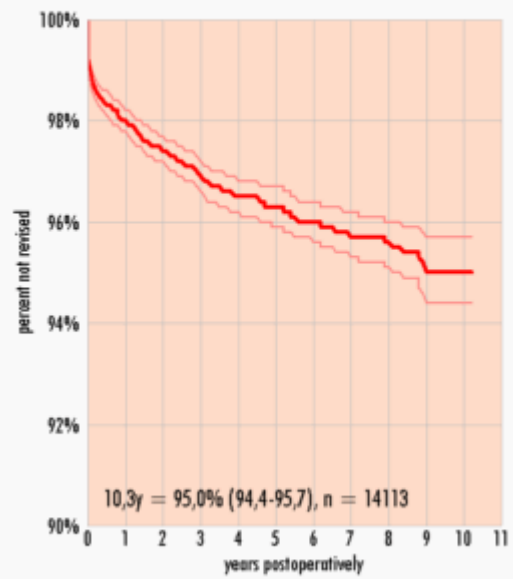
primary THRs from 1999-01-01 to 2009-06-23



Copyright © 2009 The Swedish National Hip Arthroplasty Register

### Fracture

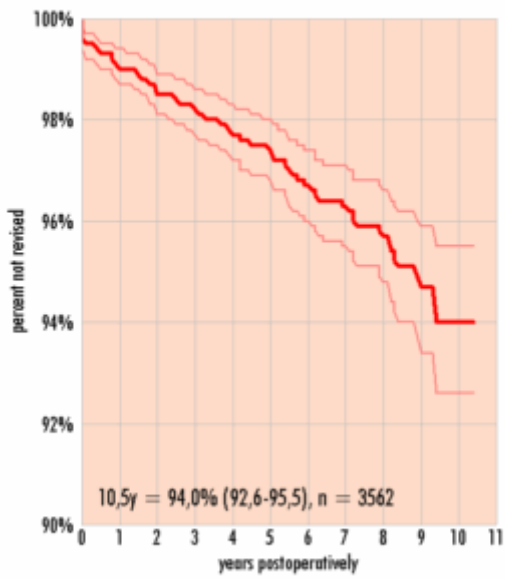
primary THRs from 1999-01-01 to 2009-03-31



Copyright © 2009 The Swedish National Hip Arthroplasty Register

### Rheumatoid Arthritis

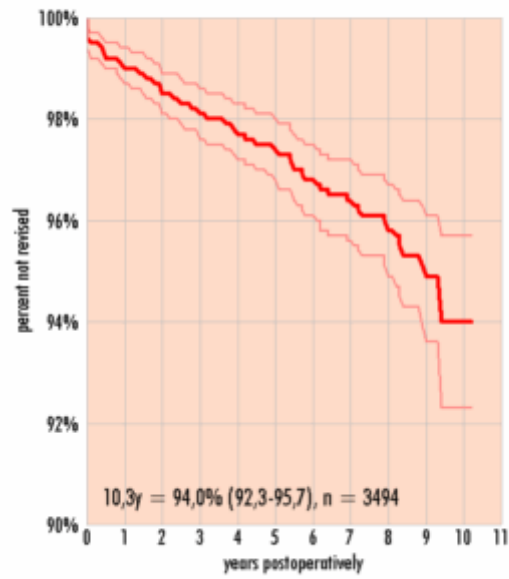
primary THRs from 1999-01-01 to 2009-06-23



Copyright © 2009 The Swedish National Hip Arthroplasty Register

### Rheumatoid Arthritis

primary THRs from 1999-01-01 to 2009-03-31



Copyright © 2009 The Swedish National Hip Arthroplasty Register